

1 Proposed GA Elevation - West

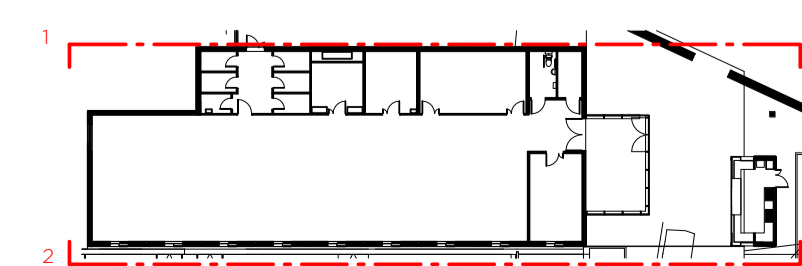


2 Proposed GA Elevation - East

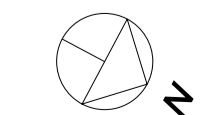
Rev.	Date	Description
PO0	29/11/2019	Issued for planning
PO1	13/12/2019	Reissued for planning

MATERIAL KEY

- | | | |
|-------------------------------------|--|-----------------------|
| 1 PPC ALUMINIUM RAINSCREEN CLADDING | 5 TIMBER COMPOSITE DOOR | 9 PHOTOVOLTAIC PANELS |
| 2 PPC ALUMINIUM PERFORATED LOUVRE | 6 TIMBER COMPOSITE FULL HEIGHT GLAZING | 10 EXISTING BRICKWORK |
| 3 PCC ALUMINIUM PERFORATED SHUTTER | 7 TIMBER COMPOSITE GLAZED DOOR | 11 SECRET GUTTER |
| 4 TIMBER COMPOSITE WINDOW | 8 ROOFLIGHT | |



Notes
 1. To be read in conjunction with all relevant information
 2. Do not scale from drawing



LANGSTAFF DAY
 ARCHITECTS

address 321 Edinburgh House, 170 Kennington Lane
 London SE11 5DP
 e-mail office@langstaffday.co.uk

project Technical Services Room
 for AELTC
 title Proposed GA Elevation - East and West

suitability S2 - For information scale 1:100@A1
 1:200@A3 drawing number 51336TSR-LDA-0010-ZZ-DR-A-0221 rev P01

This page is intentionally left blank